

UP TO 100+
MILES FROM
OUR EV!

A new and improved

WESTWARD
Industries

TASK SPECIFIC VEHICLES

Unsurpassed Maneuvering
Increase Operator Performance
Reduce Overall Footprint
Increase Citation Capture Rate
Reduce Fatigue



The GO•4

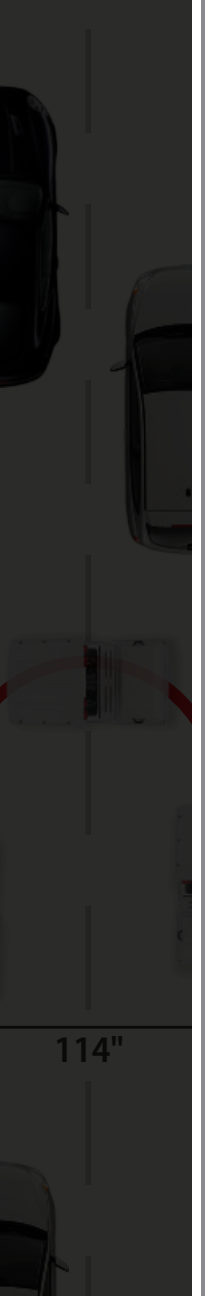
MEET OUR NEWEST GO-4 GAS

Tried and true, our GO-4 Gas model has been helping municipalities perform parking enforcement since 1990. With a highly efficient 1.0 L motor and 4 speed transmission your operators will navigate dense city centres with ease...

The New GO•4 EV

MEET THE NEW GO-4 EV – 100% ELECTRIC!

For all cities converting to a green footprint we introduce our GO-4 EV. A simple transition from our existing GO-4 platform. With the newest Lithium Ion technology expect to see up to 100+ miles of range. Simply charge and go for less than \$2.00 per charge in most States. An ideal fit for environmentally conscious agencies.



WHY CONSIDER A GO-4?

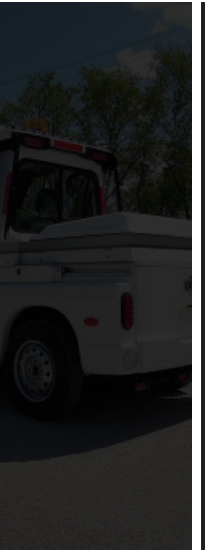
TSV – Task Specific Vehicle

SUPERIOR NAVIGATION INCREASE CITATION CAPTURE RATE \$

At a mere 52.5 inches wide, the GO-4 occupies a very small footprint. It's compact size and 3 wheel platform is an ideal configuration for navigating tight locations, dense crowds, or simply minimizing impact on traffic. The outside turning radius is less than ten feet.

Utilizing such a compact, nimble, and safe vehicle will allow operators to perform their tasks quicker and with less exhaustion. Allowing for Increased Capture Rates for your Department.

COMPACT DESIGN



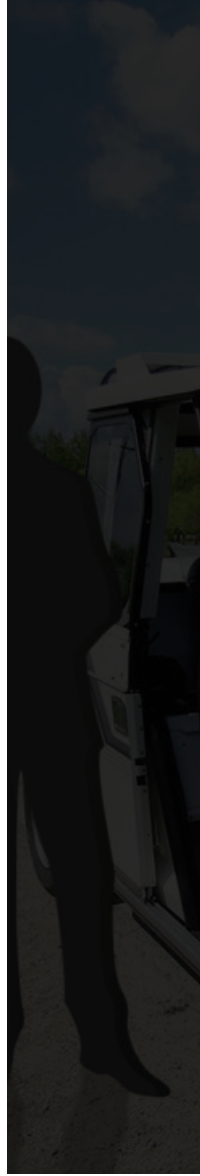
TAILORED SIZE REDUCE OPERATOR FATIGUE

At 72 inches tall, the cab is extremely easy for an operator to enter and exit all day long.

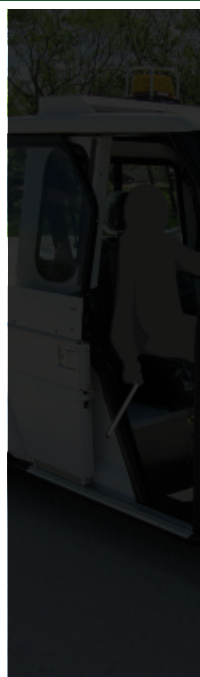
A considerable benefit for tasks that require frequent exits such as; parking citations, park & landscape work, utility meter checking, security patrolling, and many other industrial applications.

TASK SPECIFIC SLIDING DOOR DESIGN

The GO-4 has a unique double sliding door design. The operator may easily exit the vehicle on either side of the cab as needed. Providing a great benefit to perform required tasks without having impact on traffic or putting the operator in danger. Tasks are also performed quicker as the operator no longer needs to walk around the vehicle each time they exit. An example might be applying a parking ticket on a window.



DESIGN FOCUS



SAFETY IS #1!

SAFETY

A solid 2.5 inch steel roll bar chassis protects operators in the GO-4. This type of construction is typical in race cars, it is light weight yet very tough. This is a key consideration when looking at compact vehicles, as operators have the ability to easily navigate traffic, and do so at least 40 hours a week. We underline the importance of safety when selecting your compact utility vehicle.

DOOR MECHANICS

All manufactured materials used for the GO-4 are of high quality and built to last. Our sliding doors use components manufactured domestically in North America.

SAFE OPERATOR DESIGN

The below illustration shows one of the GO-4 advantages. Traffic is not disturbed while the operator can easily exit from either side of the vehicle depending on traffic direction. Over head beacons can alert oncoming traffic of the parked GO-4.

SAFETY FIRST



DEPENDABLE FLEET SERVICE with LOW MAINTENANCE

The reliability of the GO-4 has been known to provide upwards of 9 years or more per vehicle in fleet service. We are proud of this fact considering many of our units operate 40-80 hours per week all year round.

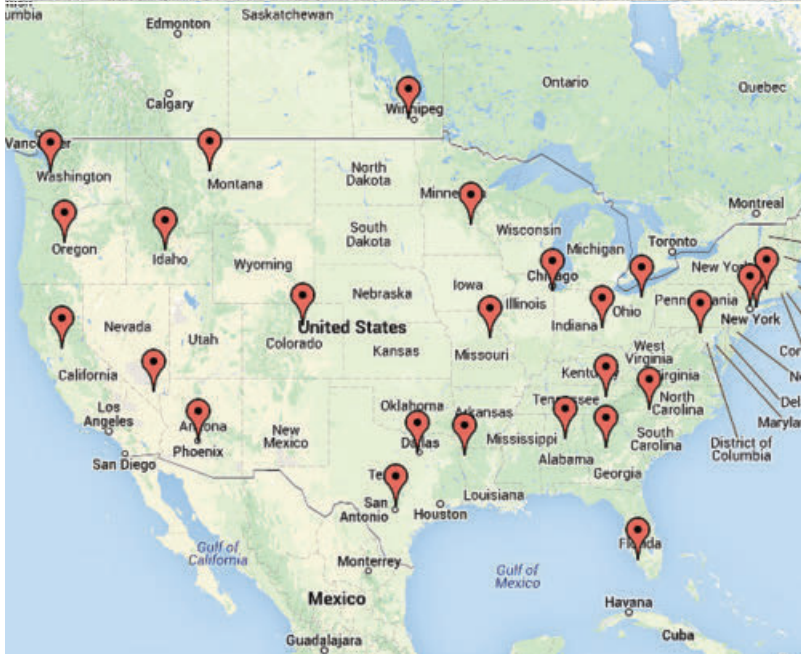
The GO-4 has been engineered for STOP and GO driving. Our smaller engine and well built transmission handles such driving methods well. Much larger engines may incur premature wear and tear when challenged by very frequent STOP and GO driving at slower speeds.

Our fuel efficient engine offers low maintenance cost and excellent fuel economy providing great savings over the years in service. Our new GO-4EV is even more reliable considering it has so many less moving mechanical parts.

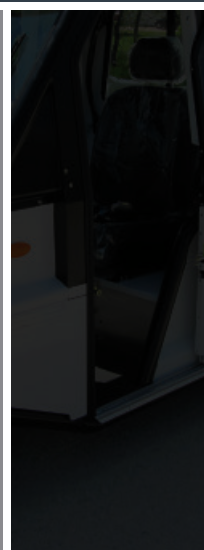
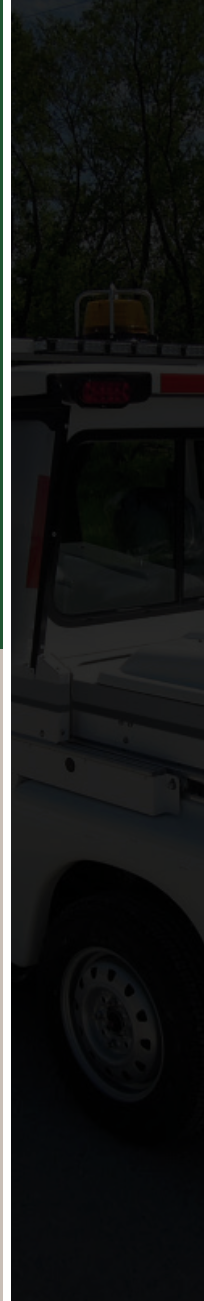
Our parts are now ONLINE for all authorized dealers.



BUY NORTH AMERICAN DEPENDABILITY!



PROVEN SERVICE



*THESE ARE ONLY SOME OF THE CURRENT APPLICATIONS FOR THE GO-4.



PARCEL DELIVERY

Our van body addition has been used by customers such as NAPA aftermarket parts. This is an ideal vehicle for routes that require smaller package volumes. Our zero emissions EV is perfect for green fleets.

PARKING ENFORCEMENT

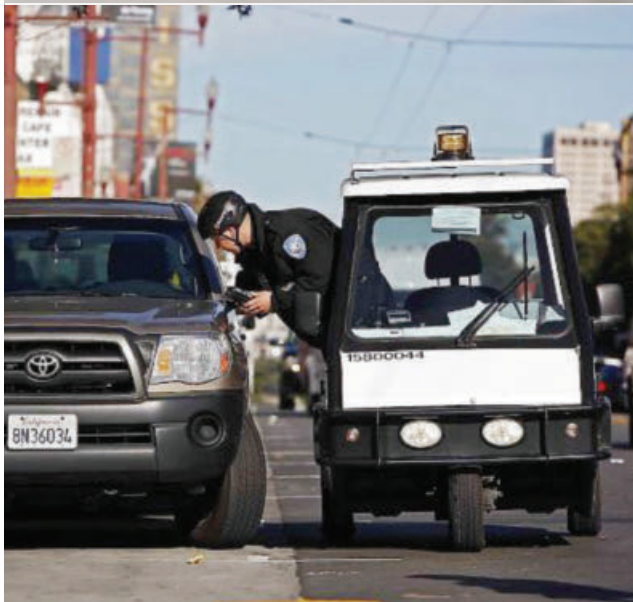
Whether a large metropolitan city or a smaller town, the GO-4 is ideally suited for parking enforcement. In fact it was originally created with parking enforcement as a driving force behind its design.

Its narrow profile of only 52.5 inches allows it to fit in many tight locations, as well as double park next to parked cars without blocking a lane. The easy access of double sliding doors allows the operator to freely jump in and out of the vehicle from either side. The operator is not restricted to exiting on the drivers side which is typical with twin passenger vehicles. The doors can remain open while driving permitting the operator easy access while navigating. We have also outfitted units with LPR technology.

SECURITY & LAW ENFORCEMENT

The unique look of the GO-4 lends itself well to all sorts of patrol. Malls as large as Mall of America in Minneapolis use our GO-4 for enforcing presence and security in the sprawling parking lots and adjacent streets.

NYC police department has used GO-4's for over 20 years to patrol events, protests, parades, and simply reach locations quicker in dense traffic. Also ideal for large sporting events or concerts. The GO-4 is street legal therefore driving on adjacent streets is not a problem.



APPLICATIONS



INDUSTRIAL EQUIPMENT

Our GO-4 flat bed has been outfitted for many various applications. To simply name a couple, street line painting and insect repellent machinery. The industrial equipment is simply fastened over the rear bed. Fuel economy is upwards of 45 MPG with the gas version, leaving large savings for agencies driving many miles on a given day. The slim design of the vehicle takes up much less space than traditional vehicles. Call us to find out which application would work for you?



UNIVERSITIES & COLLEGE CAMPUSES

For over 20 years GO-4's and now GO-4 EV's have been ideal vehicles for Universities and College campuses. Campuses have purchased GO-4's for a broad variety of reasons; parking citations, security presence, transporting landscaping tools, moving parcels and more.

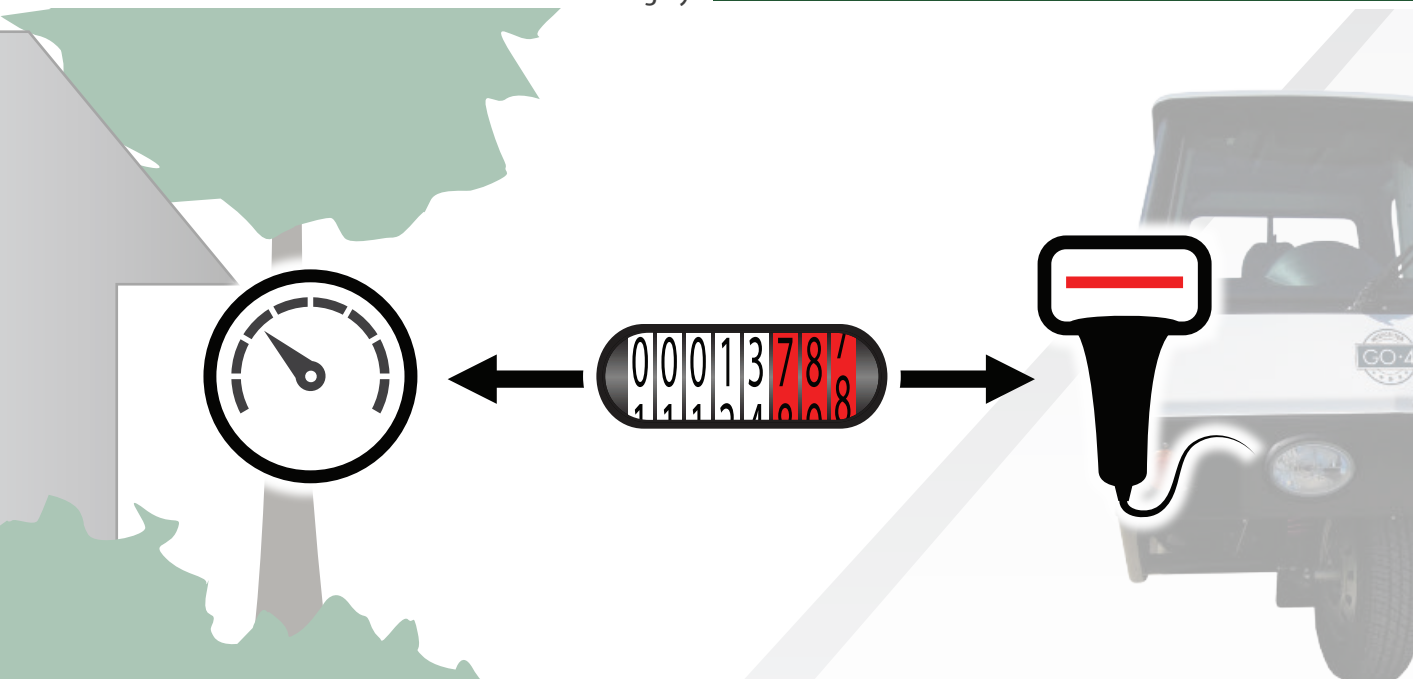
The GO-4 EV is 100% electric and fits the green mandate of many campuses. It is also street legal which provides an advantage if travel is needed on city streets.



METER READING

Many of today's meter readers use hand-held devices allowing them to obtain a reading without going inside the property. The meters installed outside of the home can be scanned from the street while driving by.

APPLICATIONS





VAN BODY

Need an efficient transporter of goods? Consider our Van Body addition. Made of high quality aluminum, heavy duty steel hinges and door lock. The GO-4 Van body is ideal for delivery of small parcels, packages, envelopes, or even equipment. Due to its compact size, the GO-4 is well suited to operate in dense locations, or when fuel and operational efficiencies are a concern. Consider our GO-4 EV van Body for Zero emissions commuting. Please inquire for specific cargo loads.



FLAT BED

As reviewed in our Applications section, the GO-4 Flat bed is an ideal fit for industrial tasks requiring a more compact, efficient vehicle that can operate all day in a stop and go environment.

The GO-4 also works well for landscaping work in parks and campuses. Our vehicle is street legal and may commute to other areas via city streets as needed. Many other vehicles for this industry may not be permitted on city streets, they may also be restricted to low speed regulations, increasing commute times. Optional walls and gate available.

LICENSE PLATE RECOGNITION (LPR)

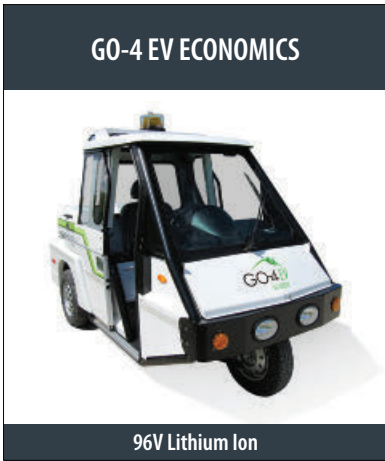
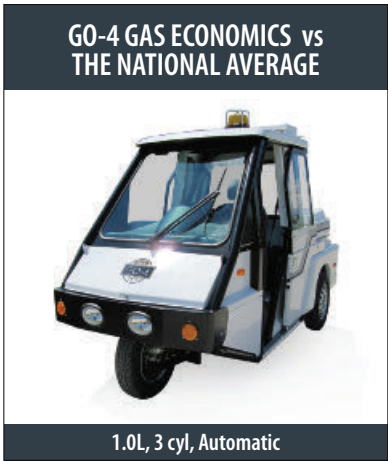
The GO-4 has previously been outfitted with LPR upon request. We work in conjunction with some of the best companies on the market. With each plate read, user-friendly in-vehicle software shows plate and vehicle images, time stamps, and more data as required.

OTHER MODELS



License Plate Recognition (LPR)

**SAVE
Your Fleet
\$\$**



MILES PER GALLON AVERAGE	REGULAR GASOLINE Up to 45
SAVE The average 2013 vehicle gets 23 MPG	YOU SAVE \$4,800!! In fuel costs over 5 years compared to the average new vehicle
ANNUAL FUEL COST **	\$1025
COST TO DRIVE 25 MILES	\$1.71
FUEL TO DRIVE 25 MILES	0.55 Gallons
COST TO FILL THE TANK AVERAGE	\$28
MILES ON TANK AVERAGE	Up to 405 Miles
TANK SIZE	9 Gallons

UP to 100+	MILES PER CHARGE
YOU SAVE \$9700!! In fuel costs over 5 years to the average new gas vehicle	SAVE Compared to average 23 MPG vehicle
\$342	ANNUAL CHARGE COST AVERAGE
\$0.56	COST TO DRIVE 25 MILES AVERAGE
Up to 3000 charges per battery at 80% DOD+++	CHARGES PER BATTERY
\$2.09	COST TO CHARGE AVERAGE
5-7 hours with 220V 10-14 hours with 110V	CHARGE
Inquire	KW SIZE

GO-4 ECONOMICS

*information on national averages is from <http://www.fueleconomy.gov> US department of energy. 2013 models as of August 2013 Fuel Costs ** 15,000 annual miles at current national fuel prices, August 2013. MPG varies on driving behavior and conditions, above claims are averages. Each operator may experience different fuel economies.

MPG on the GO-4 is confirmed by EPA testing. It has also been extensively tested using various methods at our factory; depending on conditions we have experienced MPG between 37-53 MPG (average 45).

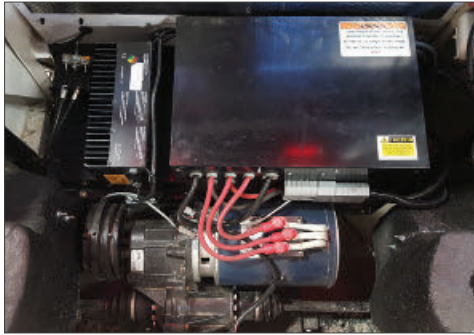
We use our EPA MPG for this document.

+Range on EV's can greatly change depending on many factors such as weather, terrain, driving habits, heat or AC utilization.

This average range can vary from 50-100 miles

++Average electricity costs from March 2014, www.eia.gov/electricity/monthly

+++DOD is depth of discharge. Battery manufacturers recommend not frequently depleting a charge below 20%.



The GO-4 EV is powered by a 55 peak HP (41kW) 3 phase AC motor. 96 Volt Lithium Ion Battery pack. 110 or 220 V charging.



LED lighting is now a standard feature on the GO-4, for all exterior lighting other than the head lights. Lighting is also positioned up high on the rear cab to easily notify vehicles of frequent stopping. Additional beacons can be added.



Rear trunk with hinged and locking lid provide extra storage space.



The GO-4 can easily be outfitted with an AM/FM radio with CD player or Bluetooth, with space for two 4x4 speakers can be fitted into the ceiling cab.

A comfortable interior offers an adjustable sliding chair, tilt steering, excellent viewing conditions, and optional cup holder arm rest.

EV - Standard fully digital center dash display. Main displays are speed, AMPS, battery charge, Volts, hour meter, and odometer.

ADDITIONAL PRODUCT IMAGES



The GO-4 is powered by the latest and most efficient Hyundai / Kia power plant. 3 cylinder, 69 horsepower, 4 speed automatic transmission.



Optional AC is available, as well as a lateral thrust alarm which notifies the driver if taking a corner too quick and tight.



Additional nerf bar option for reducing impact from any potential dents and collisions.

MOTOR

96 Volt, 55 peak HP(41KW)
3 phase AC motor

BATTERY

96 volt, Lithium Ion Battery pack

TRANSMISSION

Single speed transaxle
Forward/Reverse switch on dash

DIMENSIONS

69.5" Overall height with cab
118" Overall length
52.5" Overall width
114" Outside turning radius
36" Inside turning radius
78.5" Wheelbase

BRAKING

Hydraulic disc brakes on all three wheels
with dual master cylinder
Parking - Hydraulic over mechanical
Regenerative Braking

ELECTRICAL SYSTEM

J1772 charge inlet. 110V or 220V charging
Onboard 2.5kw Charger.
Charges in 5-7 hours with 220V, 10-14 hours with 110V.
Lights - LED headlights
DOT Approved LED Stop / Tail and Turn lights
DOT Approved High Visibility Stop and Turn lights
Gauges - LCD Digital display.
Speed, odometer, hour meter
Warning messages, and battery level
Wiring - Pre wired for Radio and Municipal lighting options

SPEED

Electronically governed at 40 or 45 mph

COLOR

White with all black frame and accents (standard)

RANGE

Up to 100 miles in ideal conditions.
See below for more detailed information.

SUSPENSION

Front - Leading link suspension
Polyurethane Isolation system
Rear - Independent McPherson Strut

CLIMATE CONTROL

Electric ceramic heater unit
Air Conditioning optional

STEERING

Adjustable tilt steering wheel
with center mounted horn

TIRES

165/60 14" Low-rolling resistance all-season radials

FEATURES

3-wheel platform with "Tube guard" tubular steel frame
White Aluminum and Plastic body panels
Storage box with lockable cover
Sliding metal doors
with independently sliding windows
Steel front and rear bumpers
3 point shoulder harness seat belt
Outside rear view mirrors
Electric windshield wiper with
intermittent control and windshield washer
Dome light, Floor mat
12V DC accessory port for phone, radio, etc.
LTA (lateral thrust alarm) safety device
Optional rear view back up camera

SEAT

One passenger adjustable forwards and backwards,
with adjustable back and headrest, 3-point seat belts

WEIGHT CAPACITY

Vehicle weight, 1600 lbs
GVWR, 2370 lbs
Rated capacity, 600 lbs including operator

WARRANTY

One year full warranty, inquire for details
Inquire for full offering - **OPTIONS**

GO-4 EV SPECIFICATIONS

TYPICAL RANGE SCENARIOS

The chart below provides estimates for typical ranges in a variety of driving scenarios:

CONDITION	RANGE
Manufacturer's estimated cruising range as measured by the test procedure	up to 100+ miles
Careful city driving, no heat or air conditioning. Mild outside temperatures. Normal terrain	up to 100+ miles
Summer driving with AC	55 - 75 miles
Winter driving (about 32oF) with heat	55 - 75 miles
Extreme terrain, with heat or AC	45 - 70 miles

Charges on 110V or 220V, uses a standard J1772 electric vehicle plug. 220V charges in 5-7 hours while 110V can take 10-14 hours. As an EV user, you can have a great influence the actual range achieved. Smooth acceleration and minimized use of accessory loads, such as the heater, will greatly increase your range between battery charges. The battery is rated at 3000 charges at an 80% discharge.

ENGINE

69 h.p., liquid cooled, 3-cylinder, overhead cam
4-cycle, electronically fuel injected

TRANSMISSION

4-speed automatic
(automotive transaxle with electronically controlled shift)

DIMENSIONS

69.5" Overall height with cab
118" Overall length
52.5" Overall width
114" Outside turning radius
36" Inside turning radius
78.5" Wheelbase

BRAKING

Hydraulic disc brakes on all three wheels
with dual circuit master cylinder
Parking - Hydraulic over mechanical

ELECTRICAL SYSTEM

Charging – Heavy Duty automotive alternator
Lights - LED headlights
DOT approved LED Stop/Tail/and Turn lights
DOT approved High Visibility Stop and Turn lights
Starting – 12-volt starting motor.
Interlock prevents starter from operating
unless shift lever is in park or neutral.
Gauges – Speedometer, fuel level, hour meter
Indicator lights – Oil pressure warning,
three stage water temperature light
(blue / below running temp, red/ above running temp,
off / normal running temp)
Charging system, Low fuel.
Wiring – automotive grade wiring harness
with abrasion resistant protective loom.
Pre wired for Radio and municipal lighting options.

WARRANTY

One year full warranty. Please inquire for details
Inquire for full offering - **OPTIONS**

SUSPENSION

Front - Leading link suspension
Polyurethane Isolation system
Rear - Independent McPherson strut

CLIMATE CONTROL

Liquid core 20,000 BTU heater/defroster
Air Conditioning optional

STEERING

Adjustable tilt steering wheel
with center mounted horn

TIRES

165/60 14" all-season radials

FEATURES

3-wheel platform with "Tube guard" tubular steel frame
Aluminum and Plastic body panels
Storage box with lockable cover
Sliding metal doors
with independently sliding windows
Steel front and rear bumpers
3 point shoulder harness seat belt
Outside rear view mirrors
Electric windshield wiper with
intermittent control and windshield washer
Dome light, Floor mat
LTA (lateral thrust alarm) Safety Device
12V DC accessory port for phone, radio, etc.

SEAT

One passenger adjustable forwards and backwards,
with adjustable back and headrest. 3-point seat belts.

FUEL TANK AND FUEL MILEAGE

9 US gallons. Up to 45 mpg. Inquire for details

WEIGHT CAPACITY

Vehicle weight, 1465 lbs. GVWR, 2235 lbs.
Rated capacity, 600 lbs plus operator

COLOR

White with all black frame and accents (standard)

SPEED

Electronically governed at 40 or 45 mph.

GO-4 GAS SPECIFICATIONS

Specifications are subject to change without notice. These vehicles comply with the U.S. D.O.T. vehicle safety standards "motorcycles", as well as meet E.P.A. and C.A.R.B. standards.
Graphics illustrated on the vehicle are strictly for the purpose of this brochure. Municipalities typically outfit the vehicles with proprietary graphics.

WESTWARD INDUSTRIES

TEL: 204 594 4100

FAX: 204 231 2607

EMAIL: sales@westwardindustries.com

613 Marion Street

Winnipeg, MB, Canada

R2J 0K2

www.westwardindustries.com

Published 2017 - copyrights by Westward Industries Ltd.